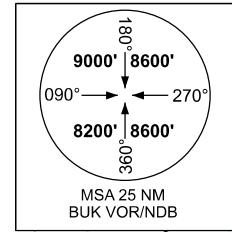


STANDARD ARRIVAL
CHART INSTRUMENT (STAR)
ICAO

TRANSITION ALTITUDE
10 000 FT

TWR : 118.1 - 257.8
APP : 119.6 - 119.1

ANKARA/ESENBOĞA
RNAV (GNSS)
RWY 21/LR



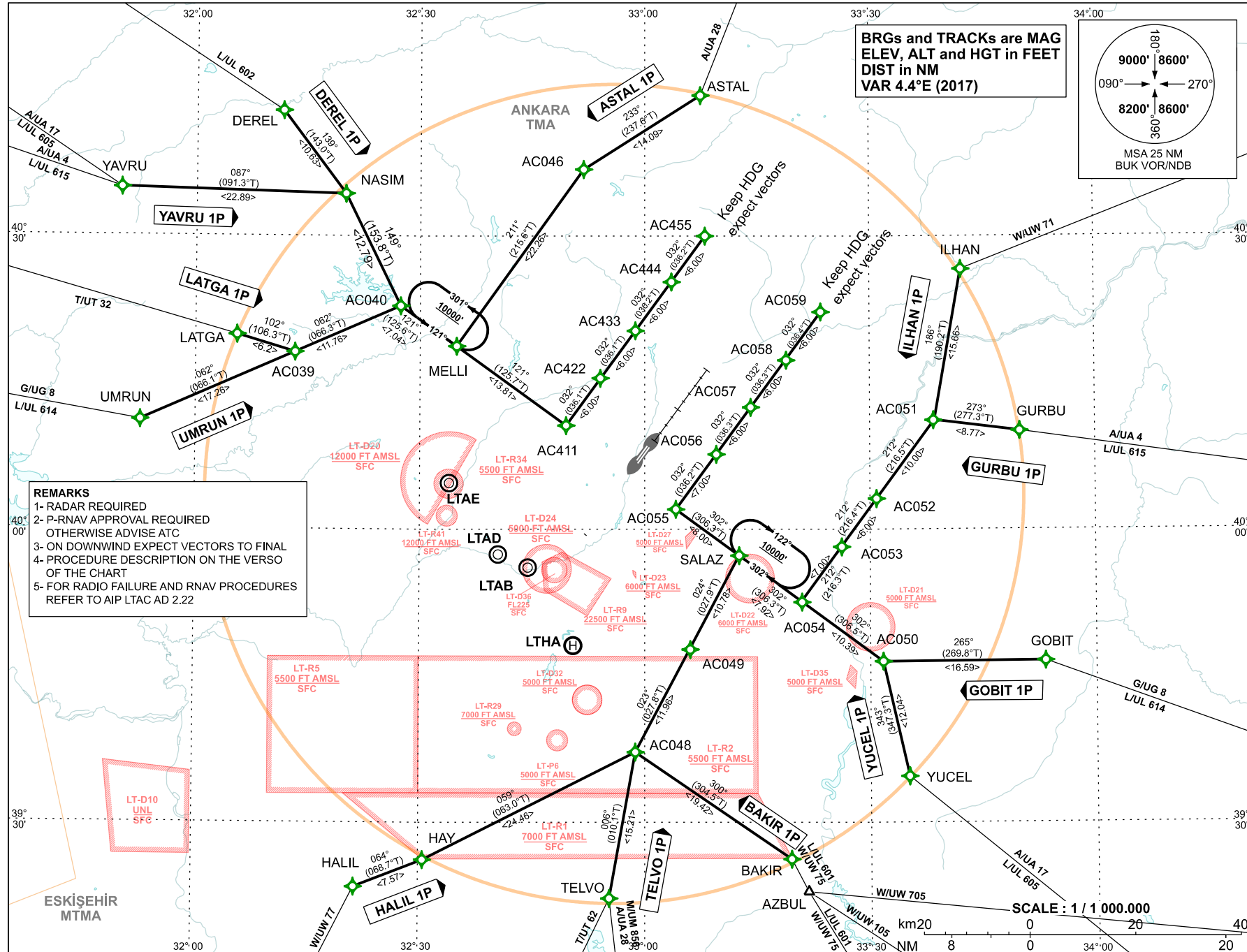
BRGs and TRACKs are MAG
ELEV, ALT and HGT in FEET
DIST in NM
VAR 4.4°E (2017)

SCALE : 1 / 1 000.000

CHANGE: LT-D36 LIMITS

DHMI - ANKARA

AIRAC AMDT 02/22



ESENBOGA AIRPORT RNAV (GNSS) STAR RWY 21L/21R

Designator	Abbreviated Description	Descent
DEREL 1P	DEREL[R] -NASIM[R]-AC040[L]- MELLI - AC411[K220-;L]-AC422- AC433-AC444 - AC455[HDG, M032]	As cleared
YAVRU 1P	YAVRU[L] -NASIM[R]- AC040[L]- MELLI - AC411[K220-;L]-AC422- AC433-AC444 - AC455[HDG, M032]	As cleared
UMRUN 1P	UMRUN[L] - AC040[A17000+;R] - MELLI - AC411[K220-;L]-AC422- AC433-AC444 - AC455[HDG, M032]	As cleared
ASTAL 1P	ASTAL[R] -AC046[L] - MELLI[L] - AC411[K220-;L]-AC422- AC433-AC444 - AC455[HDG, M032]	As cleared
ILHAN 1P	ILHAN[L] -AC051[R] - AC052-AC053 - AC054[R] -SALAZ-AC055[K220-;R] - AC056-AC057-AC058-AC059 [HDG, M032]	As cleared
GURBU 1P	GURBU -AC051[L] - AC052-AC053 - AC054[R] -SALAZ-AC055[K220-;R] - AC056-AC057-AC058-AC059 [HDG, M032]	As cleared
GOBIT 1P	GOBIT[L] -AC050[R] - AC054 - SALAZ-AC055[K220-;R] - AC056-AC057-AC058-AC059 [HDG, M032]	As cleared
YUCEL 1P	YUCEL[R] -AC050[L] - AC054 - SALAZ-AC055[K220-;R] - AC056-AC057-AC058-AC059 [HDG, M032]	As cleared
BAKIR 1P	BAKIR[L] -AC048[R]-AC049[A16000+] -SALAZ[L] - AC055[K220-;R] - AC056-AC057-AC058-AC059 [HDG, M032]	As cleared
TELVO 1P	TELVO[R] - AC048[R] - AC049[A16000+] -SALAZ[L] - AC055[K220-;R] - AC056-AC057-AC058-AC059 [HDG, M032]	As cleared
HALIL 1P	HALIL[L] - HAY[L] - ACO48[L] - AC049[A16000+] -SALAZ[L] - AC055[K220-;R] - AC056-AC057-AC058-AC059 [HDG, M032]	As cleared
LATGA 1P	LATGA-AC039[L] - AC040[A17000+;R]- MELLI-AC411[K220-;L]-AC422 - AC433-AC444-AC455[HDG,M032]	As cleared

Note1: At first contact with ESENBOGA APP report if unable to comply the RNAV procedure.

Note2: At first contact with ESENBOGA APP report only call sign.

Note3: IAS 200 Kts on base leg/closing heading to final approach upto 12 NM to touchdown. IAS 180 Kts on final approach course within 12 NM to 8 NM to touchdown. IAS 170 Kts on final approach course within 8 NM to 6 NM to touchdown. IAS 160 Kts on final approach course within 6 NM to 4 NM to touchdown.

Note4: These speeds are applied for ATC separation purposes and are mandatory. All speed restrictions are to be flown as accurately as possible. Aircraft unable to conform to these speeds should inform ATC and state what speeds to be used.

Type	Fix identifier (Waypoint name)	Latitude	Longitude
FlyBy	AC039	40:18:08.10N	032:13:18.25E
FlyBy	AC040	40:22:50.98N	032:27:24.09E
FlyBy	AC411	40:10:39.65N	032:49:31.05E
FlyBy	AC422	40:15:30.86N	032:54:08.05E
FlyBy	AC433	40:20:21.87N	032:58:45.72E
FlyBy	AC444	40:25:12.70N	033:03:24.05E
FlyBy	AC455	40:30:03.34N	033:08:03.04E
FlyBy	AC046	40:36:52.05N	032:51:50.11E
FlyBy	AC048	39:37:14.86N	032:58:45.55E
FlyBy	AC049	39:47:49.71N	033:05:59.86E
FlyBy	AC050	39:46:29.17N	033:31:41.64E
FlyBy	AC051	40:11:12.25N	033:38:36.92E
FlyBy	AC052	40:03:08.97N	033:30:52.28E
FlyBy	AC053	39:58:18.74N	033:26:14.37E
FlyBy	AC054	39:52:39.90N	033:20:50.97E
FlyBy	AC055	40:02:05.57N	033:04:09.26E
FlyBy	AC056	40:07:44.63N	033:09:33.01E
FlyBy	AC057	40:12:35.05N	033:14:11.23E

Type	Fix identifier (Waypoint name)	Latitude	Longitude
FlyBy	LATGA	40:19:53.00N	032:05:32.00E
FlyBy	AC058	40:17:25.27N	033:18:50.10E
FlyBy	AC059	40:22:15.30N	033:23:29.64E
FlyBy	ASTAL	40:44:26.00N	033:07:28.00E
FlyBy	BAKIR	39:26:16.00N	033:19:28.00E
FlyBy	DEREL	40:42:50.00N	032:11:36.00E
FlyBy	GOBIT	39:46:34.07N	033:53:12.95E
FlyBy	GURBU	40:10:06.00N	033:49:58.00E
FlyBy	HALIL	39:23:26.00N	032:21:28.00E
FlyBy	HAY	39:26:11.00N	032:30:34.00E
FlyBy	ILHAN	40:26:38.00N	033:42:13.00E
FlyBy	UMRUN	40:11:09.89N	031:52:40.52E
FlyBy	NASIM	40:34:20.00N	032:20:00.00E
FlyBy	TELVO	39:22:16.00N	032:55:18.00E
FlyBy	YAVRU	40:34:56.00N	031:49:58.00E
FlyBy	YUCEL	39:34:44.00N	033:35:07.00E
FlyBy	MELLI	40:18:44.56N	032:34:52.96E
FlyBy	SALAZ	39:57:21.45N	033:12:33.17E